



Rotational
Mouldings

Floataction Systems

Viscount Rotational Mouldings

Rotational
Collar Slurry
Pipeline
Polyethylene
Hose Pontoon

Floatation Systems

Viscount Rotational Mouldings Pty Ltd (VRM) has been providing solutions to the Australasian Market for over 25 years. Specialising in rotational and injection moulding processes, the Viscount group forms part of the Linpac global network with operations in the UK, Europe and Australasia. VRM itself has a manufacturing plant located in Carrum Downs VIC.

At Viscount we understand the importance of keeping things afloat offering a range of collar, slurry, hose and pipeline floatation products. All floats are easy to install and made from Chemical Resistant, UV stabilized polyethylene. These floats are designed to suit the toughest marine conditions. The floats can be moulded from a range of colours and have the option to be polyurethane foam filled. Applications include Aquaculture, Marinas, Mining and Dredging and are limited only by your imagination. Viscount offer an extensive range of buoyancy support for pipes and cables, but should you have a unique requirement VRM can design and manufacture the buoyancy for your specific needs.

"Viscount keeping business afloat"



Contact details:

Sales Enquires: 1300 366 685
Email: vrmsales@viscount.com.au
Web: www.viscountroto.com.au
ABN: 19067462337

Viscount Rotational
Mouldings P/L Vic
81 Frankston Gardens Drive
Carrum Downs, 3201
Victoria, Australia

Tel: (03) 8770 3200
Fax: (03) 8770 3204

Viscount Rotational
Mouldings P/L NSW
98 Airids Road
Minto, 2566
NSW, Australia

Tel: (02) 9820 2222
Fax: (02) 9820 2227

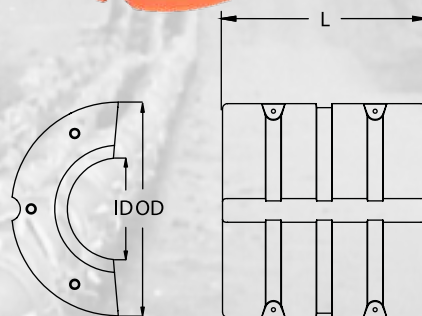
Viscount Rotational
Mouldings P/L QLD
PO Box 83
Banyo, 4014
Queensland, Australia

Tel: (07) 3267 1485
Fax: (07) 3267 1486

Hose Collar

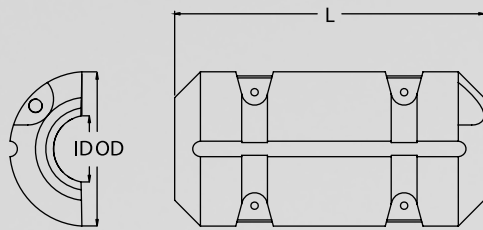


- Made in two sections that can be either bolted or strapped together around the hose or pipe.
- An internal groove enables the fitment of spacers or sleeves to adjust for pipe fitment or compression clamping on the hose while offering a recess location for the hose.
- Floats have the option of polyurethane foam filling.
- Capacity is based on fully submerged float.
- Standard Colour – Orange.
- Other colour options are available.
- Stainless steel nuts, bolts and washers included.
- High impact and UV resistant Polyethylene construction.



Code	Foam Filled	Description	Inside Diameter (mm)	Outside Diameter x Length (mm)	Capacity Ltr.	Unit Kg.
FL3008	No	Hose Collar	570	1300 x 800	850	50
FL3036	Yes	Hose Collar	570	1300 x 800	850	70
FL3012	No	Hose Collar	110	460 x 508	80	8
FL3034	Yes	Hose Collar	110	460 x 508	80	10
FL3014	No	Hose Collar	400	840 x 800	340	25
FL3035	Yes	Hose Collar	400	840 x 800	340	33
FL3015	No	Hose Collar	810	1300 x 800	640	50
FL3117	Yes	Hose Collar	810	1300 x 800	640	66
FL3016	No	Hose Collar	750	1300 x 800	700	50
FL3017	Yes	Hose Collar	750	1300 x 800	700	68
FL3037	No	Power/Cable	90	460 x 508	81	8
FL3019	Yes	Power/Cable	90	460 x 508	81	10
FL3031	No	Hose Collar	500	840 x 800	280	25
FL3032	Yes	Hose Collar	500	840 x 800	280	32
FL3013	No	Hose Collar	300	700 x 600	180	16
FL3033	Yes	Hose Collar	300	700 x 600	180	20

Slurry Collar



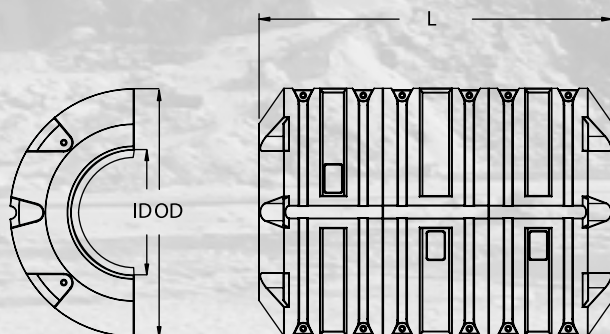
- Shaped float end ensures less drag and streamline profile reduces risk of entanglement.
- Made in two sections that can be either bolted or strapped together around the hose or pipe.
- Adaptable internal urethane spacers that suit hose/pipe diameters from 10mm to 130mm.
- Stainless steel nuts, bolts and washers.
- High impact and UV resistant polyethylene
- Floats have the option of polyurethane foam filling.
- Capacity is based on fully submerged float.



Internal spacer discs designed for the FL3010 slurry collar float. These discs can be easily machined to suit actual pipe sizing while offering a supportive cradle clamp to the hose or pipe.

Code	Foam Filled	Description	Inside Diameter (mm)	Outside Diameter x Length (mm)	Capacity Ltr.	Unit Kg.
FL3010	No	Slurry Collar	10 - 130	300 x 600	22	4
FL3009	Yes	Slurry Collar	10 - 130	300 x 600	22	4.5

Slurry Collar



This large slurry collar was designed to offer excellent buoyancy on water and impressive structural strength on land. This six piece float is easily assembled on site and can handle loads in excess of two tonne if used in a tidal environment. Internal grooves provide location for optional clamping rubbers or pipe locators.



Code	Foam Filled	Description	Inside Diameter (mm)	Outside Diameter x Length (mm)	Capacity Ltr.	Unit Kg.
FL3122	No	Slurry Float	710	1400 x 2000	2000	246

Slurry Collar

Viscount Rotational Mouldings offer a range of slurry floats that have been designed to have less drag and easy installation.

- Made in two sections that can be either bolted or strapped together around the hose or pipe.
- Internal groove enables the fitment of spacers or sleeves to adjust for pipe fitment and restrict movement along the pipe.
- Floats have the option of polyurethane foam filling.
- Capacity is based on fully submerged float.
- Standard colour – Orange.
- Other colour options are available.
- Stainless steel nuts, bolts and washers.
- High impact and UV resistant Polyethylene.

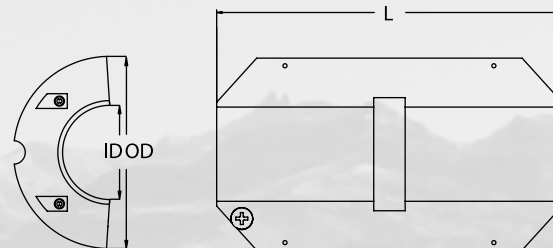
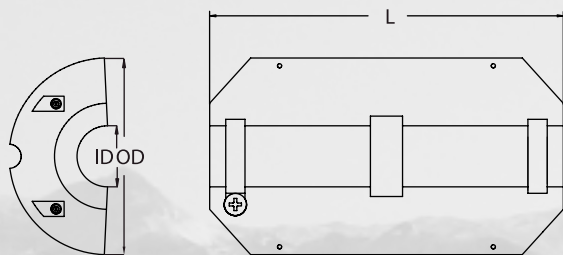
Float FL3026 (shown in line drawing below) has been designed to incorporate two optional internal spacer discs. Discs - #21HW1006, each can be easily machined to suit actual pipe sizing while offering a supportive cradle clamp to the hose or pipe.

Right: Image of Slurry Collar Float FL3022.

Below: Image of Two Spacer Disc Slurry Collar Float FL3020 / FL3026



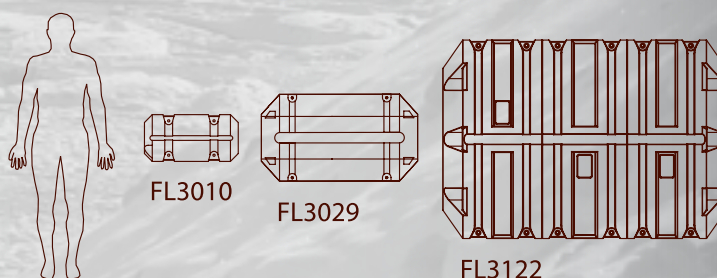
Slurry Collar Float FL3022 shown in line drawing below.



Code	Foam Filled	Description	Inside Diameter (mm)	Outside Diameter x Length (mm)	Capacity Ltr.	Unit Kg.
FL3029	No	Slurry Collar	300	610 x 1100	245	24
FL3018	Yes	Slurry Collar	300	610 x 1100	245	30
FL3020	No	Slurry Collar	190	610 x 1100	270	25
FL3026	Yes	Slurry Collar	190	610 x 1100	270	32
21HWI006	N/A	Spacer Disc	10 - 190	230	N/A	N/A
FL3021	No	Slurry Collar	250	610 x 1100	250	24
FL3022	Yes	Slurry Collar	250	610 x 1100	250	30
FL3043	No	Slurry Collar	315	610 x 1100	240	24
FL3044	Yes	Slurry Collar	315	610 x 1100	240	30

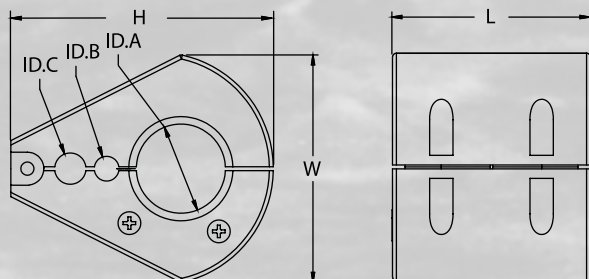
Scale Key:

Size of three floats in comparison to 6FT (183cm) person.



Hose Collar

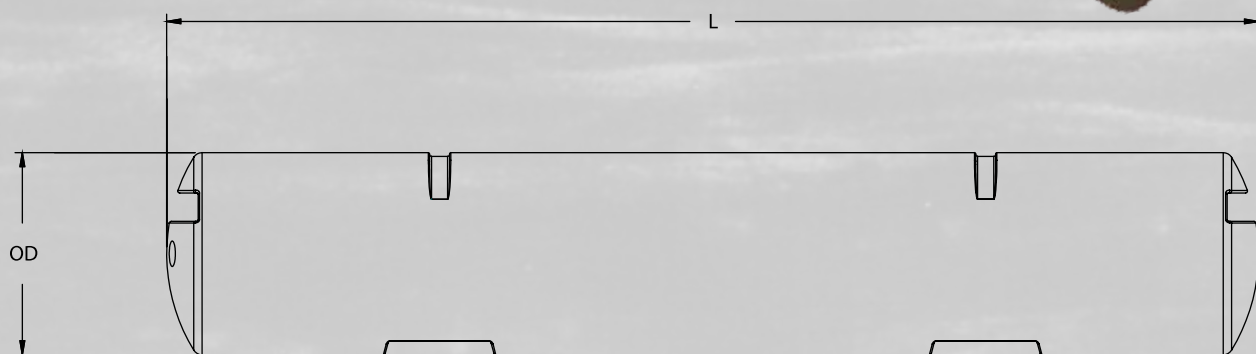
For those special applications when more than one service support is required, Viscount offer the triple hose support float. This float originally designed for Dampier Mining offers the ability to support multiple combinations of pipes or hoses. Easily assembled around the services with a unique pivot bolting system. This float has the option of being polyurethane foam filled.



Code	Foam Filled	Description	Inside Dimensions: ID.A x ID.B x ID.C (mm)	Outside Dimensions: W x L x H (mm)	Capacity Ltr.	Unit Kg.
FL3041	No	Hose Float	270 x 75 x 95	670 x 785 x 600	145	20
FL3040	Yes	Hose Float	270 x 75 x 95	670 x 785 x 600	145	23

Pipeline Floats

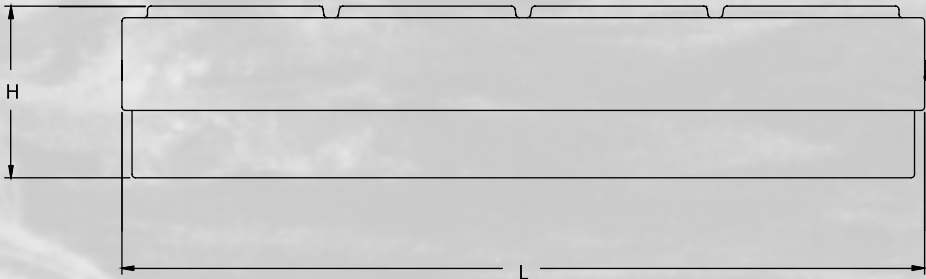
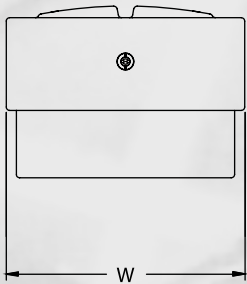
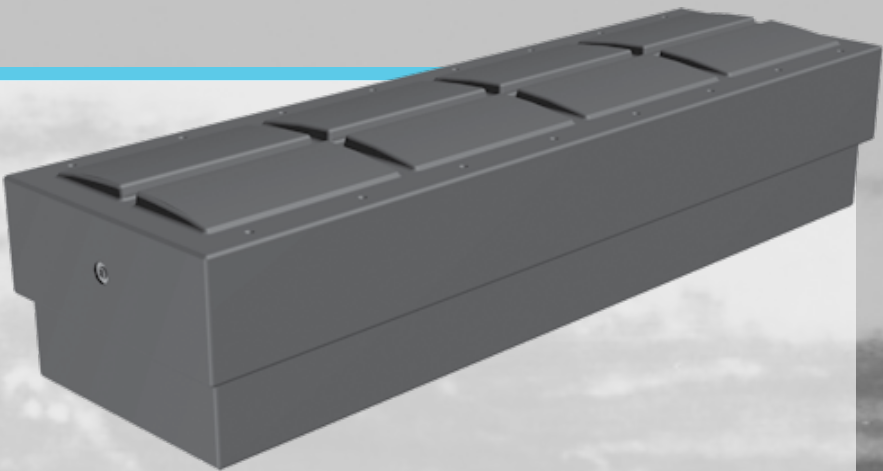
This float is designed to be used either individually or in a tandem formation supporting the pipe or hose. The tandem floats are positioned with the use of two polyethylene moulded saddles located at each end to maintain a rigid platform and support the pipe.



Code	Foam Filled	Description	Inside Dimensions	Outside Diameter x Length (mm)	Capacity Ltr.	Unit Kg.
FL3027	No	Pipeline Float	N/A	500 x 2700	530	35
FL3028	Yes	Pipeline Float	N/A	500 x 2700	530	48
FL3042	N/A	Pipeline Float Saddle (Sm)	N/A	N/A	N/A	N/A
FL3030	N/A	Pipeline Float Saddle (Lg)	N/A	N/A	N/A	N/A

Pontoon Floats

This float was originally designed to support an environmental gas collection cover above a sewage treatment pond. The flexibility of the design permits the attachment of decking, fabric and beams to the float for all your buoyancy requirements. For additional security the float can be foam filled.



Code	Foam Filled	Description	Dimensions: L x W x H (mm)	Capacity Ltr.	Unit Kg.
FL3024	No	Pontoon Float	2400 x 710 x 510	800	40



Contact details:

Sales Enquires: 1300 366 685
Email: salesvrm@viscount.com.au
Web: www.viscountroto.com.au
ABN: 19067462337

**Viscount Rotational
Mouldings P/L Vic**
81 Frankston Gardens Drive
Carrum Downs, 3201
Victoria, Australia

Tel: (03) 8770 3200
Fax: (03) 8770 3204

**Viscount Rotational
Mouldings P/L NSW**
98 Airds Road
Minto, 2566
NSW, Australia

Tel: (02) 9820 2222
Fax: (02) 9820 2227

**Viscount Rotational
Mouldings P/L QLD**
PO Box 83
Banyo, 4014
Queensland, Australia

Tel: (07) 3267 1485
Fax: (07) 3267 1486

Viscount Rotational Mouldings Pty Ltd shall not accept liability of any kind arising out of misuse of the product or use for any other purpose than its intended use as contained herein. All information supplied in this brochure was correct at time of printing. Viscount Rotational Mouldings Pty Ltd reserves the right to change specifications, colours and designs without further notice. Effective 01.09.2010.